



**GEOJUNXION**

**API**

**PREMIUM LOCATION-AWARE CONTENT**

**HEALTH ALERT ZONES**

**> PRODUCT DATASHEET**

High Alerts Zones Suite

This GeoJunxion API provides aggregated global information about COVID-19 pandemic statistics down to local level across specific focus countries.

In those countries (see coverage on the right), the GeoJunxion team has joined forces with the GeoHealthApp team to develop a unique location based Health Alert Zone risk evaluation.

This score, combined with up to 50 different types of places (i.e. shopping centres, theatre, parks, train stations, kindergarten etc..) is then used to calculate the risk of COVID-19 exposure for a specific area within a detailed area of 100 x100 square meters.

**KEY FEATURES**

- Up to date global COVID-19 (WHO) information including historical data storage
- Up to date local government COVID-19 information in the focus countries
- Global GeoJunxion Admin Boundaries
- Health exposure risk factor down to 100 x100 square meters in focus countries

**TYPICAL USE CASES**

It gives a COVID-19 risk score for a specific area, in order to advise a user whether his or her destination is located in a safe area or not. The user can then make a more informed decision about his or her travel plans. Businesses can also benefit from the risk score feature, since they can take the appropriate safety measures when planning their logistics operations to certain destinations.

**BENEFITS**

- Authoritative data of official COVID 19 cases augmented with GeoJunxion administrative maps information
- Unique health exposure risk evaluation up to 100 x100 square meters resolution
- Data updated daily
- Global and local coverage in focus countries
- Consistent and complete map agnostic information in one source, one database

**DELIVERY FORMATS**

API (JSON)

**PROJECTION**

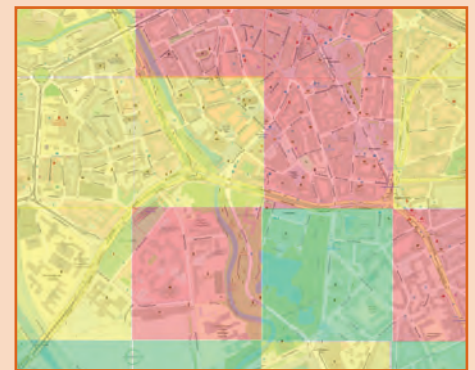
The global projection system used in GeoJunxion data is in decimal degrees (latitude and longitude) with WGS84 as datum, according to the ellipsoid model used for computations. The spatial reference id is EPSG:4326.

**CHARACTER SET**

The Unicode character-set used in the names, is in UTF-8

**COVERAGE**

Our global database contains both global and local data which is updated on a daily basis. It includes all 200+ countries which are part of the WHO COVID-19 information portal. Detailed local level information for those focus countries: Germany, Switzerland, UK, USA, The Netherlands, Belgium, France and Italy.



**CONTACT OUR SALES DEPARTMENT:**

sales@GeoJunxion.com • +31 (0) 10 885 1200 or visit [www.GeoJunxion.com/developer](http://www.GeoJunxion.com/developer)



GIS SERVICES



MARKETING



FLEET MGMT.



AUTOMOTIVE



WEB SOLUTIONS



NAVIGATION



TRANSPORTATION



ASSET MGMT.



MOBILE MAPPING



REAL ESTATE



INSURANCE



GOVERNMENT