



**PREMIUM LOCATION-AWARE CONTENT**

# SCHOOL SAFETY ZONES

(Safety Alert Zones)

## AT A GLANCE

The School Safety Zones dataset and services provide smart polygons and information about areas around schools and kindergartens. These are areas where many traffic accidents occur every year.

The School Safety Zones are part of the Safety & High Alert Zones data suite. The Safety Alert Zones data suite provides a unique combination of dynamic, statistical and geometrical information to help vehicle navigation, route optimization, location-based analysis or even a tool with the intent to analyze and design smart areas around Schools.

## SOLUTION

### FEATURES

- Polygons/boundaries; streets around schools and kindergartens
- Address information of schools and kindergartens
- Zones based on information such as road network, road intersections, cross walks, public transport spots, parking areas
- Polygons/boundaries around schools and kindergartens taking into account increased traffic (i.e. vehicles; bikes; pedestrians), bus stops and crosswalks from all directions
- Each Polygons/boundaries have information about opening and closing hours and public holidays
- Schools and kindergartens including school type and address information
- Consistent and complete map agnostic information which can be used with any database and mapping platform

### USE CASES

This dataset can be integrated into fleet management and navigation systems to create a warning, advising drivers they are entering a School Safety Zone. It can help drivers to keep the highest possible attention around school areas or increased traffic congestion at certain times of the day, paying particular attention to bus stops and crosswalks. It can also help optimize planning to avoid driving in School Safety Zones during opening and closing hours.

This dataset can be utilized in many market sectors, such as: Navigation, Fleet Management, Transport and Logistics, Real Estate, Insurtech, Geomarketing, Smart Cities, Municipalities and Governments.

### BENEFITS

- To enhance the safety for both students and drivers around schools and kindergartens
- To reduce the number of crashes involving motor vehicles with pedestrians
- To have less traffic around schools and kindergartens during opening and closure hours
- To have a clear picture where to expect traffic from all directions around schools and kindergartens
- To send relevant alerts to drivers before entering School Safety Zones
- To improve the estimated time of arrival for drivers by avoiding traffic congestion at certain times of the day around schools and kindergartens
- To save time and money by avoiding traffic congestion at certain times of the day around School Safety Zones

### DELIVERY FORMATS

Shape, GeoJson or other formats, through raw dataset or dedicated API

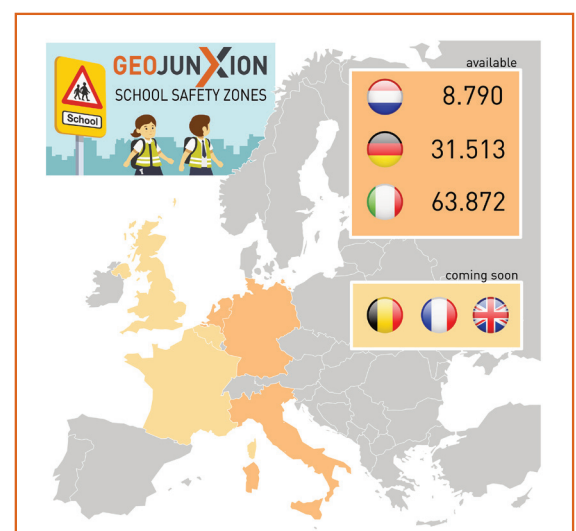
### PROJECTION

The global projection system used in GeoJunxion data is in decimal degrees (latitude and longitude) with WGS84 as datum, according to the ellipsoid model used for computations.

### CHARACTER SET

The Unicode character-set used in the names is in UTF-8.

### COVERAGE INFORMATION



### FIND OUT MORE

For more information or technical samples please visit our website:

[www.geojunxion.com](http://www.geojunxion.com) or  
contact our sales team:  
[sales@GeoJunxion.com](mailto:sales@GeoJunxion.com)